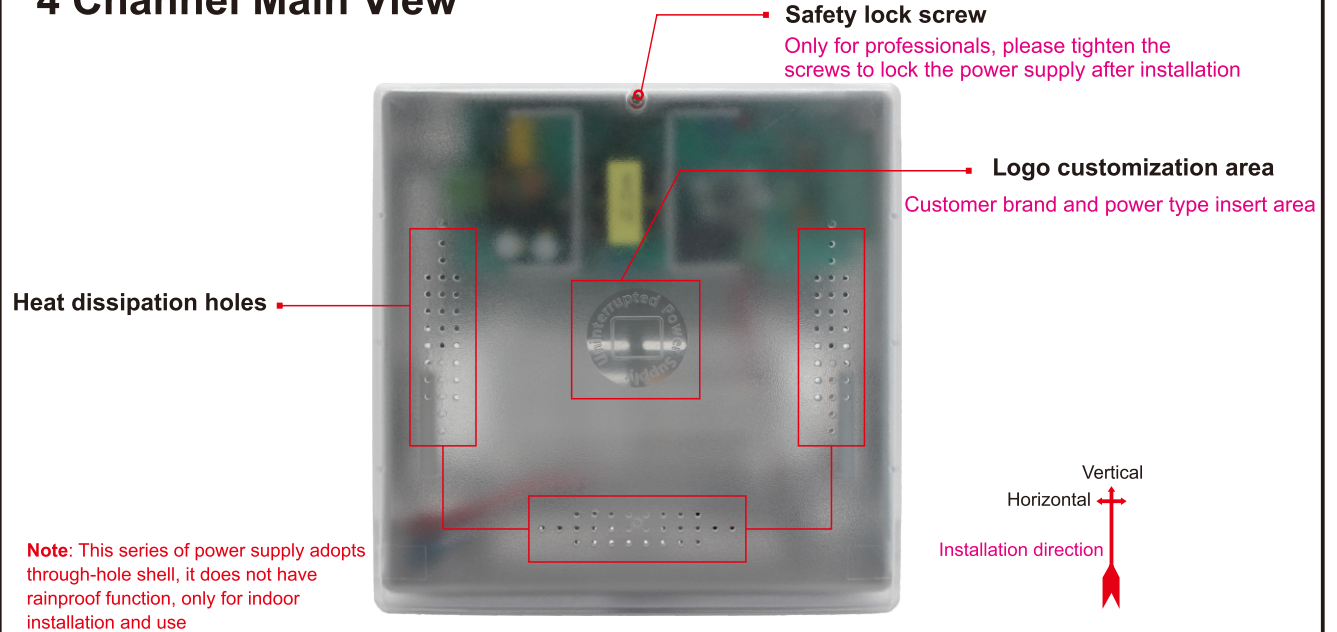


## Multi-Way Output Plastic Boxed Power Supply- UPS

Name	Multi-Way Output Plastic Boxed Power Supply- UPS	
Channel of output	4CH	9CH
Input voltage	100-240V~,50/60Hz	
Input current	1.5A Max	1.8A Max
Output voltage	DC 12V	DC 12V
Output current	5A	10A
Power	60W	120W
PTC protection current	1.1A Max	1.1A Max
Efficiency	≥85%	≥85%
Load loss	≤0.5W	≤0.8W
Output voltage	11-15V	
Battery specifications	Lead-acid batteries: 12V/7Ah	Lead-acid batteries: 12V/17Ah
Material of enclosure	Flame retardant ABS plastic	
Enclosure size	190mm×186mm×86.6mm	281.5mm×220.5mm×109mm
Working environment	-20~45°C;20%~90%RH,No condensation	
Storage environment	-25~65°C;10%~95%RH	

### 4 Channel Main View

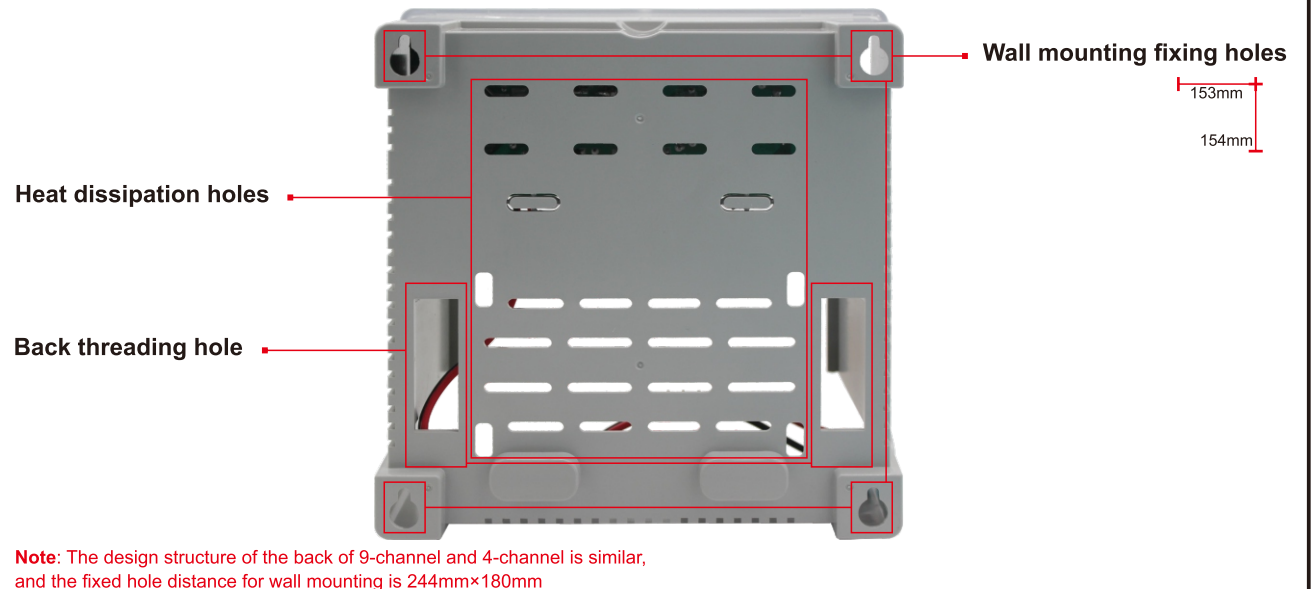


### 4 Channel Top View



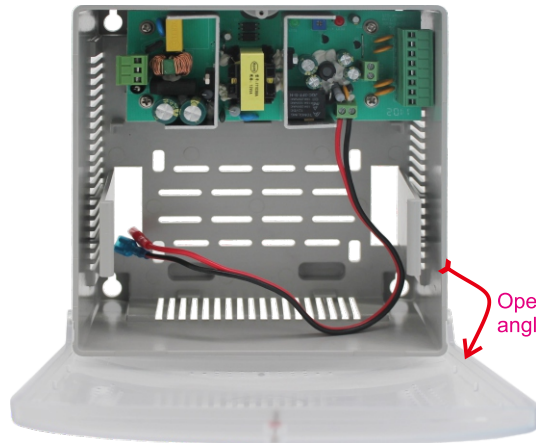
**Fence type heat dissipation window**  
Located on the bottom and sides, good heat dissipation

### 4 Channel Backside View

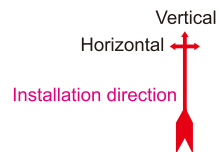


## 4 Channel Internal View

L × W × H:  
190mm×186mm×86.6mm



Opening and closing angle is about 80°



## 4 Channel Internal Details

### Power status indicator

LED1: green light, the indicator light is on when the mains power is input normally; when the power is off, the indicator light is off  
LED2: red light, when the battery is powered, the indicator light is on; when the battery is low, the indicator light is off

### Box security lock screw fixing hole

### Transformer

### Internal mains access terminal

3 Pin screw lock terminal  
Used to connect live wire, neutral wire, earth terminal  
Input voltage: 100-240V~, 50/60Hz

### IC power supply heat sink

Large heat dissipation area, more stable power output

### Lead-acid battery fixed installation area

The battery is fixed by the cards on both sides, the maximum capacity of the battery on both sides is 12V/7Ah

### Channel output voltage adjustment

The output voltage of the channel can be adjusted through the built-in knob: 11-15V

### Total power output

When the centralized power supply connection method is adopted, the total power of the power supply can be output after being connected. Electrical power can break through the power limit of channel output

### Output channel terminals

When wiring the channel output terminal and terminal position mark, please pay attention to the channel position and mark to prevent switching, follow the left "+" right "-"

### Channel PTC self-recovery insurance

The maximum safe current of the channel is 1.1A

### Backup battery access terminal

Connect the lead-acid battery, the factory-built cable will temporarily supply power to the output when the mains is disconnected. When the mains is connected and the battery is low, this port can be used as a backup battery only when the output voltage is adjusted  $\geq 13.8V$  Charging, red end (+) black end (-)

### Spare battery fixing card

The battery can be fixed and stuck when installing the battery, distributed on both sides of the battery fixed installation area in the box

**Note:** While adjusting the output voltage, the charging voltage of the backup battery access terminal will also change synchronously. The lead-acid battery can be charged only when the voltage is  $\geq 13.8V$

## 9 Channel Internal View 1



L × W × H:  
281.5mm×220.5mm×109mm

## 9 Channel Internal View 2



Vertical  
Horizontal  
Installation direction

Opening and closing angle is about 90°

## 9 Channel Internal Details

### Power status indicator

LED1: green light, the indicator light is on when the mains power is input normally; when the power is off, the indicator light is off

G-LED-R: when the battery is powered, the indicator light is on; when the battery is low, the indicator light is off

### IC power supply heat sink

Large heat dissipation area, more stable power output

### Transformer

### Channel output voltage adjustment

The output voltage of the channel can be adjusted through the built-in knob: 11-15V

### Internal mains access terminal

3 Pin screw lock terminal  
Used to connect live wire, neutral wire, earth terminal  
Input voltage: 100-240V~, 50/60Hz

### Fence type heat dissipation window

Located at the bottom, large heat dissipation area

### Lead-acid battery fixed installation area

The battery is fixed by the cards on both sides, the maximum capacity of the battery on both sides is 12V/7Ah

**Note:** While adjusting the output voltage, the charging voltage of the backup battery access terminal will also change synchronously. The lead-acid battery can be charged only when the voltage is  $\geq 13.8V$

### Total power output

When the centralized power supply connection method is adopted, the total power of the power supply can be output after being connected. Electrical power can break through the power limit of channel output

### IC power supply heat sink

Large heat dissipation area, more stable power output

### Backup battery access terminal

Connect the lead-acid battery, the factory-built cable will temporarily supply power to the output when the mains is disconnected. When the mains is connected and the battery is low, this port can be used as a backup battery only when the output voltage is adjusted  $\geq 13.8V$  charging, red end(+) black end(-)

### Output channel terminals

When wiring the channel output terminal and terminal position mark, please pay attention to the channel position and mark to prevent switching, follow the left "+" right "-"

Channel PTC self-recovery insurance

The maximum safe current of the channel is 1.1A

### Box security lock screw fixing hole

### Spare battery fixing card

The battery can be fixed and stuck when installing the battery, distributed on both sides of the battery fixed installation area in the box

